



HAMMERS

**Ram
mer®**

RAMMER HITS FIRST

The world's best-known and most-respected brand of hydraulic hammers offers a comprehensive range of powerful, productive and durable attachments that are suitable for carriers in the 0.6 to 100 tons operating weight class.

Divided into four hydraulic hammer families, the Rammer hydraulic hammer range is unsurpassed in its innovation and reliability and offers class-leading power-to-weight characteristics that mark them as the best in their class.

Rammer's product selection is supported by a dedicated global dealer network with ready access to Genuine Rammer parts and a wealth of operational knowledge and experience to ensure that your Rammer hammer continues to contribute to your company's profitability for its entire working life.



CONTENT

COMPACT RANGE

- 108 4-7
- 211 4-7
- 315 4-7
- 522 4-7

SMALL RANGE

- 111 8-11
- 222 8-11
- 333 8-11
- 255 8-11
- 355 8-11
- 455 8-11
- 555 12-17
- 777 12-17
- 999 12-17

MEDIUM RANGE

- 1533 .. 18-21
- 2155 .. 18-21

LARGE RANGE

- 2577 .. 22-25
- 3288 .. 22-25
- 4099 .. 22-25
- 5011 .. 24-25
- 7013 .. 24-25

PARTS AND TOOLS

- 26-27

COMPACT RANGE

Model	Working weight, kg (lb)	Impact rate, bpm	Operating pressure, bar (psi)	Tool diameter, mm (in)	Acceptable oil flow, l/min (gal/min)	Mini excavator weight, allowed range, t (lb)
108	70-85 (150-190)	400-1900	100-140 (1450-2030)	104 (4.09)	12-30 (3.2-7.9)	0.8-1.8 (1800-4000)
211	100-120 (220-260)	400-1900	100-140 (1450-2030)	119 (4.69)	14-40 (3.7-10.6)	1.2-2.6 (2600-5700)
315	135-160 (300-350)	400-1900	100-140 (1450-2030)	131 (5.16)	16-50 (4.2-13.2)	1.6-3.6 (3500-7900)
522	205-245 (450-540)	400-1900	110-150 (1595-2175)	150 (5.91)	20-70 (5.3-18.5)	2.5-5.5 (5500-12100)

108

211

315

522

FEATURES

- Plug and play
- Mounting either as pin-on or with mounting bracket
- Unbreakable tool
- Wide oil flow range
- Composite bushing-no greasing needed
- Twin-handed
- Membrane type accumulator
- CBE (Constant Blow Energy)
- No tie rods
- Protected hose connection

BENEFITS

- Easy to use and service
- Easy to install
- Broad carrier range
- Low operating costs
- Excellent fit for rental
- High reliability
- Constant high productivity



	108	211	315	522
Minimum working weight, flange mounted (1)	85 kg (190 lb)	120 kg (260 lb)	160 kg (350 lb)	245 kg (540 lb)
Impact rate	400-1900 bpm	400-1900 bpm	400-1900 bpm	400-1900 bpm
Operating pressure	100-140 bar (1450-2030 psi)	100-140 bar (1450-2030 psi)	100-140 bar (1450-2030 psi)	110-150 bar (1595-2175 psi)
Pressure relief, min (2)	150 bar (2175 psi)	150 bar (2175 psi)	150 bar (2175 psi)	160 bar (2320 psi)
Pressure relief, max	220 bar (3190 psi)	220 bar (3190 psi)	220 bar (3190 psi)	220 bar (3190 psi)
Oil flow range	12-30 l/min (3.2-7.9 gal/min)	14-40 l/min (3.7-10.6 gal/min)	16-50 l/min (4.2-13.2 gal/min)	20-70 l/min (5.3-18.5 gal/min)
Back pressure, max	20 bar (290 psi)	1 bar (290 psi)	20 bar (290 psi)	20 bar (290 psi)
Input power	7.0 kW (9 hp)	9.3 kW (12 hp)	11.7 kW (16 hp)	17.5 kW (23 hp)
Tool diameter	104 mm (4.09 in)	119 mm (4.69 in)	131 mm (5.16 in)	150 mm (5.91 in)
Miniexcavator weight, optimum range (3)	1.0-1.5 t (2200-3300 lb)	1.5-2.1 t (3300-4600 lb)	2.0-2.9 t (4400-6400 lb)	2.9-4.2 t (6400-9300 lb)
Miniexcavator weight, allowed range (3)	0.8-1.8 t (1800-4000 lb)	1.2-2.6 t (2600-5700 lb)	1.6-3.6 t (3500-7900 lb)	2.5-5.5 t (5500-12100 lb)
Skid steer, robot weight, optimum range (3)	0.7-1.0 t (1500-2200 lb)	1.0-1.4 t (2200-3100 lb)	1.3-1.9 t (2900-4200 lb)	1.9-2.8 t (4200-6200 lb)
Skid steer, robot weight, allowed range (3)	0.5-1.3 t (1100-2900 lb)	0.8-1.8 t (1800-4000 lb)	1.1-2.5 t (2400-5500 lb)	1.6-3.9 t (3500-8600 lb)
Noise level, measured sound power level, LWA (4)	129 dB	127 dB (127 dB)	128 dB (128 dB)	133 dB (133 dB)
Noise level, guaranteed sound power level, LWA (4)	133 dB	131 dB (131 dB)	132 dB (132 dB)	137 dB (137 dB)

(1) Includes average mounting bracket and standard tool (2) Minimum setting = actual operating pressure + 50 bar or (+ 725 psi). (3) Check carrier allowed attachment weight from carrier manufacturer. Check application requirements. (4) According to European Union DIRECTIVE 2000/14/EC

SMALL RANGE

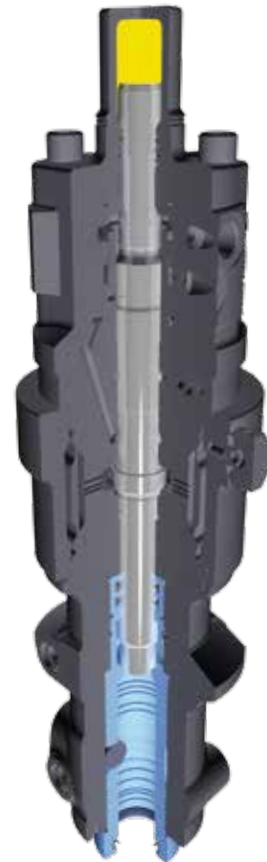
Model	Working weight, kg (lb)	Impact rate, bpm	Operating pressure, bar (psi)	Tool diameter, mm (in)	Acceptable oil flow, l/min (gal/min)	Mini excavator weight, allowed range, t (lb)
111	70 (150)	1000-2600	80-130 (1160-1885)	36 (1.42)	15-33 (4.0-8.7)	0.8-1.8 (1800-4000)
222	105 (230)	1100-2600	100-150 (1450-2175)	42 (1.65)	20-48 (5.3-12.7)	1.2-2.7 (2600-6000)
333	150 (330)	1050-2050	100-150 (1450-2175)	50 (1.97)	30-63 (7.9-16.6)	1.8-4.0 (4000-8800)

111**222****333****FEATURES**

- Streamlined shape
- Single tool bushing
- Simple tool installation
- Membrane type accumulator
- High frequency
- FBE (Fixed Blow Energy)
- PRS (Pressure Release System)
- No tie rods

BENEFITS

- Able to work in narrow spaces
- Fast and easy service
- Low operating costs



	111	222	333
Minimum working weight, flange mounted (1)	70 kg (150 lb)	105 kg (230 lb)	150 kg (330 lb)
Impact rate	1000-2600 bpm	1100-2600 bpm	1050-2050 bpm
Operating pressure	80-130 bar (1160-1885 psi)	100-150 bar (1450-2175 psi)	100-150 bar (1450-2175 psi)
Pressure relief, min (2)	130-180 bar (1885-2610 psi)	150-200 bar (2175-2900 psi)	150-200 bar (2175-2900 psi)
Pressure relief, max	220 bar (3190 psi)	220 bar (3190 psi)	220 bar (3190 psi)
Oil flow range	15-33 l/min (4.0-8.7 gal/min)	20-48 l/min (5.3-12.7 gal/min)	30-63 l/min (7.9-16.6 gal/min)
Back pressure, max	20 bar (290 psi)	20 bar (290 psi)	20 bar (290 psi)
Input power	7.15 kW (10 hp)	12 kW (16 hp)	15.75 kW (21 hp)
Tool diameter	36 mm (1.42 in)	42 mm (1.65 in)	50 mm (1.97 in)
Miniexcavator weight, optimum range (3)	1.0-1.5 t (2200-3300 lb)	1.4-2.2 t (3100-4900 lb)	2.0-3.2 t (4400-7100 lb)
Miniexcavator weight, allowed range (3)	0.8-1.8 t (1800-4000 lb)	1.2-2.7 t (2600-6000 lb)	1.8-4.0 t (4000-8800 lb)
Skid steer, robot weight, optimum range (3)	0.7-1.0 t (1500- 2200 lb)	0.9...1.5 t (2000... 3300 lb)	1.3-2.1 (2860-4630)
Skid steer, robot weight, allowed range (3)	0.6-1.3 t (1300-1700 lb)	0.8-1.8 t (1800-11800 lb)	1.2-2.7 t (2600-21500 lb)
Noise level, measured sound power level, LWA (4)	117 dB (117 dB)	123 dB (123 dB)	119 dB (119 dB)
Noise level, guaranteed sound power level, LWA (4)	121 dB (121 dB)	127 dB (127 dB)	123 dB (123 dB)

(1) Includes average mounting bracket and standard tool (2) Minimum setting = actual operating pressure + 50 bar or (+ 725 psi). (3) Check carrier allowed attachment weight from carrier manufacturer. Check application requirements. (4) According to European Union DIRECTIVE 2000/14/EC

SMALL RANGE

Model	Working weight, kg (lb)	Impact rate, bpm	Operating pressure, bar (psi)	Tool diameter, mm (in)	Acceptable oil flow, l/min (gal/min)	Mini excavator weight, allowed range, t (lb)
255	110 (240)	600-3200	95-150 (1380-2175)	40 (1.57)	15-35 (4.0-9.2)	1.2-2.5 (2600-5500)
355	150 (330)	800-3000	90-150 (1305-2175)	48 (1.89)	25-55 (6.6-14.5)	1.6-3.6 (3500-7900)
455	230 (510)	700-2600	100-170 (1450-2465)	56 (2.20)	40-70 (10.6-18.5)	2.7-5.2 (6000-11500)
555	275 (610)	600-1800	90-140 (1305-2030)	72 (2.83)	35-90 (9.2-23.8)	3.2-8.0 (7100-17600)
777	385 (850)	500-1700	90-140 (1305-2030)	80 (3.15)	40-120 (10.6-31.7)	4.3-9.5 (9500-20900)
999	505 (1110)	500-1700	100-140 (1450-2030)	90 (3.54)	50-150 (13.2-39.6)	5.8-13.0 (12800-28700)

255**355****455****FEATURES**

- Single body design
- Simple tool installation
- Sealed housing design
- High frequency
- Wide oil flow range
- Membrane type accumulator
- Protected hose connection
- Sound suppressed
- No tie rods
- CBE

BENEFITS

- Easy to install
- Broad carrier range
- Low operating costs
- Excellent fit for rental
- High reliability
- Constant high productivity



	255	355	455
Minimum working weight, flange mounted (1)	110 kg (240 lb)	150 kg (330 lb)	230 kg (510 lb)
Impact rate	600-3200 bpm	800-3000 bpm	700-2600 bpm
Operating pressure	95-150 bar (1380-2175 psi)	90-150 bar (1305-2175 psi)	100-170 bar (1450-2465 psi)
Pressure relief, min (2)	150-200 bar (2175-2900 psi)	150-200 bar (2175-2900 psi)	150-220 bar (2175-3190 psi)
Pressure relief, max	220 bar (3190 psi)	220 bar (3190 psi)	220 bar (3190 psi)
Oil flow range	15-35 l/min (4.0-9.2 gal/min)	25-55 l/min (6.6-14.5 gal/min)	40-70 l/min (10.6-18.5 gal/min)
Back pressure, max	20 bar (290 psi)	20 bar (290 psi)	20 bar (290 psi)
Input power	8.8 kW (12 hp)	13.8 kW (19 hp)	19.8 kW (27 hp)
Tool diameter	40 mm (1.57 in)	48 mm (1.89 in)	56 mm (2.20 in)
Min excavator weight, optimum range (3)	1.4-2.1 t (3100-4600 lb)	1.9-3.1 t (4200-6800 lb)	3.1-4.6 t (6800-10100 lb)
Min excavator weight, allowed range (3)	1.2-2.5 t (2600-5500 lb)	1.6-3.6 t (3500-7900 lb)	2.7-5.2 t (6000-11500 lb)
Skid steer, robot weight, optimum range (3)	0.9-1.4 t (2000-3100 lb)	1.3-2.1 t (2900-4600 lb)	2.1-3.1 t (4600-6800 lb)
Skid steer, robot weight, allowed range (3)	0.8-1.7 t (1800-3700 lb)	1.1-2.4 t (2400-5300 lb)	1.8-3.5 t (4000-7700 lb)
Noise level, measured sound power level, LWA (4)	N/A dB	N/A dB	N/A dB
Noise level, guaranteed sound power level, LWA (4)	N/A dB	N/A dB	N/A dB

(1) Includes average mounting bracket and standard tool (2) Minimum setting = actual operating pressure + 50 bar or (+ 725 psi). (3) Check carrier allowed attachment weight from carrier manufacturer. Check application requirements. (4) According to European Union DIRECTIVE 2000/14/EC

555**777****999****FEATURES**

- Single body design
- Simple tool installation
- Sealed housing design
- High frequency
- Wide oil flow range
- Membrane type accumulator
- Twin-handed hose connection
- Protected hose connection
- Sound suppressed
- No tie rods
- CBE+ (Constant Blow Energy plus)

BENEFITS

- Easy to use and service
- Low operating costs
- Broad carrier range
- High reliability
- Constant high productivity



	555	777	999
Minimum working weight, flange mounted (1)	275 kg (610 lb)	385 kg (850 lb)	505 kg (1110 lb)
Impact rate	600-1800 bpm	500-1700 bpm	500-1700 bpm
Operating pressure	90-140 bar (1305-2030 psi)	90-140 bar (1305-2030 psi)	100-140 bar (1450-2030 psi)
Pressure relief, min (2)	140-200 bar (2030-2900 psi)	140-190 bar (2030-2755 psi)	150-190 bar (2175-2755 psi)
Pressure relief, max	220 bar (3190 psi)	220 bar (3190 psi)	220 bar (3190 psi)
Oil flow range	35-90 l/min (9.2-23.8 gal/min)	40-120 l/min (10.6-31.7 gal/min)	50-150 l/min (13.2-39.6 gal/min)
Back pressure, max	20 bar (290 psi)	20 bar (290 psi)	20 bar (290 psi)
Input power	21 kW (28 hp)	28 kW (38 hp)	35 kW (47 hp)
Tool diameter	72 mm (2.83 in)	80 mm (3.15 in)	90 mm (3.54 in)
Miniexcavator weight, optimum range (3)	3.6-5.8 t (7900...12800 lb)	4.9-7.8 t (10800-17200 lb)	6.6-10.6 t (14600-23400 lb)
Miniexcavator weight, allowed range (3)	3.2-8.0 t (7100-17600 lb)	4.3-9.5 t (9500-20900 lb)	5.8-13.0 t (12800-28700 lb)
Skid steer, robot weight, optimum range (3)	2.4-3.9 t (5300-8600 lb)	3.3-5.2 t (7300-11500 lb)	4.4-7.1 t (9700-15700 lb)
Skid steer, robot weight, allowed range (3)	1.9-5.3 t (4200-11700 lb)	2.6-6.3 t (5700-13900 lb)	3.9-8.7 t (8600-19200 lb)
Noise level, measured sound power level, LWA (4)	118 dB (118 dB)	120 dB (120 dB)	123 dB (123 dB)
Noise level, guaranteed sound power level, LWA (4)	122 dB (122 dB)	124 dB (124 dB)	127 dB (127 dB)

(1) Includes average mounting bracket and standard tool (2) Minimum setting = actual operating pressure + 50 bar or (+ 725 psi). (3) Check carrier allowed attachment weight from carrier manufacturer. Check application requirements. (4) According to European Union DIRECTIVE 2000/14/EC

MEDIUM RANGE

Model	Working weight, kg (lb)	Impact rate, bpm	Operating pressure, bar (psi)	Tool diameter, mm (in)	Acceptable oil flow, l/min (gal/min)	Carrier weight, allowed range, t (lb)
1533	870 (1920)	550-1050	140-160 (2030-2320)	105 (4.13)	80-140 (21.1-37.0)	10-19 (22000-41900)
2155	1240-1280 (2730-2820)	490-780	140-160 (2030-2320)	118 (4.65)	120-180 (31.7-47.6)	16-26 (35300-57300)

1533

2155

FEATURES

- Slim and lightweight design
- Membrane type accumulator
- Twin-handed
- Sound suppressed
- VIDAT tie rods
- FBE (Fixed blow energy)
- Safety valve (Optional)
- Ramlube I (Optional)
- Ramlube III (Optional)
- Heavy duty set (Optional)
- Integrated HD hoses and couplings

BENEFITS

- Safe capital investment
- Good access to narrow places
- Constant high productivity
- Low operating costs
- Easy and safe installation
- High reliability



	1533	2155
Minimum working weight, flange mounted (1)	870 kg (1920 lb)	1240-1280 kg (2730-2820 lb)
Impact rate	550-1050 bpm	490-780 bpm
Operating pressure	140-160 bar (2030-2320 psi)	140-160 bar (2030-2320 psi)
Pressure relief, min (2)	220 bar (3190 psi)	220 bar (3190 psi)
Pressure relief, max	240 bar (3480 psi)	240 bar (3480 psi)
Oil flow range	80-140 l/min (21.1-37.0 gal/min)	120-180 l/min (31.7-47.6 gal/min)
Back pressure, max	10 bar (145 psi)	10 bar (145 psi)
Input power	37 kW (50 hp)	48 kW (64 hp)
Tool diameter	105 mm (4.13 in)	118 mm (4.65 in)
Carrier weight, optimum range (3)	11-17 t (24300-37500 lb)	19-22 t (41900-48500 lb)
Carrier weight, allowed range (3)	10-19 t (22000-41900 lb)	16-26 t (35300-57300 lb)
Noise level, measured sound power level, LWA (4)	120 dB (120 dB)	124 dB (124 dB)
Noise level, guaranteed sound power level, LWA (4)	124 dB (124 dB)	128 dB (128 dB)

(1)Depending on mounting configuration (2)Minimum setting = actual operating pressure + 50 bar or (+ 725 psi) (3)Check carrier allowed attachment weight from carrier manufacturer. Check application requirements (4)According to European Union DIRECTIVE 2000/14/EC

LARGE RANGE

Model	Working weight, kg (lb)	Impact rate, bpm, Long/Short stroke	Operating pressure, bar (psi)	Tool diameter, mm (in)	Acceptable oil flow, l/min (gal/min)	Carrier weight, allowed range, t (lb)
2577	1760 (3880)	450-750	135-145 (1960-2105)	135 (5.31)	140-200 (37.0-52.8)	21-30 (46300-66100)
3288	2330-2350 (5140-5180)	370-630/ 460-740	150-160 (2175-2320)	142 (5.59)	160-250 (42.3-66.0)	26-40 (57300-88200)
4099	3380-3540 (7450-7800)	400-560/ 520-700	150-160 (2175-2320)	166 (6.54)	250-350 (66.0-92.5)	34-55 (75000-121300)
5011	4750 (10470)	370-530	160-170 (2320-2460)	190 (7.48)	280-380 (73.9-100.4)	43-80 (94800-176400)
7013	7000 (15432)	350-450	150-170 (2175-2465)	203 (7.99)	300-400 (79.3-105.7)	60-100 (132300-220500)

2577

3288

4099

5011

7013

FEATURES

- Membrane type accumulator
- Twin-handed Indexable power cell (2577, 3288, 4099, 5011)
- Sound suppressed
- VIDAT tie rods (2577, 3288, 4099, 5011)
- FBE (Fixed blow energy)
- Ramlube I (Optional)
- Ramlube II (Optional)
- Heavy duty housing
- Idle blow protector, Selection on/off (2577, 3288, 4099, 5011)

- Stroke selector, Selection long/short (3288, 4099, 5011)
- Safety valve (2577)
- Soft blow sensor (2577)
- Ramdata II (3288, 4099, 5011)

BENEFITS

- Safe capital investment
- Constant high productivity
- Easy and safe installation
- Low operating costs
- High reliability



	2577	3288	4099	5011	7013
Minimum working weight, flange mounted (1)	1760 kg (3880 lb)	2400-2500 kg (5290-5510 lb)	3380-3540 kg (7450-7800 lb)	4750 kg (10470 lb)	7000 kg (15430 lb)
Impact rate, Long stroke	450-750 bpm	370-630 bpm	400-560 bpm	370-530 bpm	350-450 bpm
Impact rate, Short stroke	N/A	460-740 bpm	520-700 bpm	450-620 bpm	N/A
Operating pressure	135-145 bar (1960-2105 psi)	150-160 bar (2175-2320 psi)	150-160 bar (2175-2320 psi)	160-170 bar (2320-2460 psi)	150-170 bar (2175-2465 psi)
Pressure relief, min (2)	190 bar (2755 psi)	220 bar (3190 psi)	210 bar (3045 psi)	220 bar (3190 psi)	220 bar (3190 psi)
Pressure relief, max	220 bar (3190 psi)	240 bar (3480 psi)	230 bar (3335 psi)	230 bar (3335 psi)	230 bar (3335 psi)
Oil flow range	140-200 l/min (37.0-52.8 gal/min)	160-250 l/min (42.3-66.0 gal/min)	250-350 l/min (66.0-92.5 gal/min)	280-380 l/min (73.9-100.4 gal/min)	300-400 l/min (79.3-105.7 gal/min)
Back pressure, max	10 bar (145 psi)	10 bar (145 psi)	12 bar (175 psi)	10 bar (145 psi)	10 bar (145 psi)
Input power	48 kW (64 hp)	67 kW (90 hp)	93 kW (125 hp)	108 kW (145 hp)	113 kW (152 hp)
Tool diameter	135 mm (5.31 in)	142 mm (5.59 in)	166 mm (6.54 in)	190 mm (7.48 in)	203 mm (7.99 in)
Carrier weight, optimum range (3)	23-28 t (50700-61700 lb)	28-38 t (61700-83800 lb)	37-50 t (81600-110200 lb)	45-69 t (99200-152100 lb)	65-95 t (143300-209400 lb)
Carrier weight, allowed range (3)	21-30 t (46300-66100 lb)	26-40 t (57300-88200 lb)	34-55 t (75000-121300 lb)	43-80 t (94800-176400 lb)	60-100 t (132300-220500 lb)
Noise level, measured sound power level, LWA (4)	120 dB	124 dB	126 dB	122 dB	125 dB
Noise level, guaranteed sound power level, LWA (4)	124 dB	128 dB	130 dB	126 dB	129 dB

(1) Depending on mounting configuration (2) Minimum setting = actual operating pressure + 50 bar or (+ 725 psi) (3) Check carrier allowed attachment weight from carrier manufacturer. Check application requirements (4) According to European Union DIRECTIVE 2000/14/EC

PARTS AND TOOLS FOR OPTIMUM PERFORMANCE

Rammer genuine parts and tools utilize only the finest raw materials and heat treatment processes to ensure optimum durability across a broad range of industries, materials and applications. These parts and tools are available through a highly experienced global dealer network that is unmatched in this industry and which ensures that you get the right part or tool, in the right place, at the right time.

During recent years Rammer has researched tool design to provide longer service life and enhanced value. Our innovative tool design and worldwide testing programs have resulted in improved wear characteristics and greater durability across a broad range of applications. Furthermore, several new job-specific tools have been developed.

Rammer offers tailor made service kits designed to keep your hammer hitting harder. For more information with regards to Rammer's high quality parts and tools, please contact your local authorized Rammer dealer.

**Ram
mer®**

Sandvik Mining and Construction Oy
Taivalkatu 8, P.O.Box 165
FI- 15101 Lahti, Finland
Phone Int. +358 205 44 151
www.rammer.com